

# MELS

## MELS ST-HUBERT — STAGE E

94' x 79'9" x 17'4" High  
(7,680 sq ft/713 m<sup>2</sup>)  
Cyc 18' x 79'9" High

### CAPACITY LOAD

#### ELECTRIC

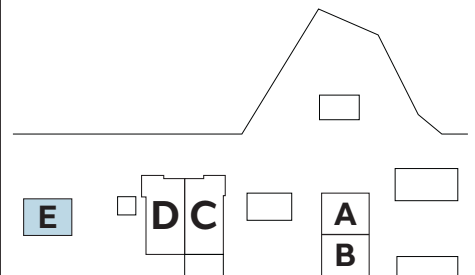
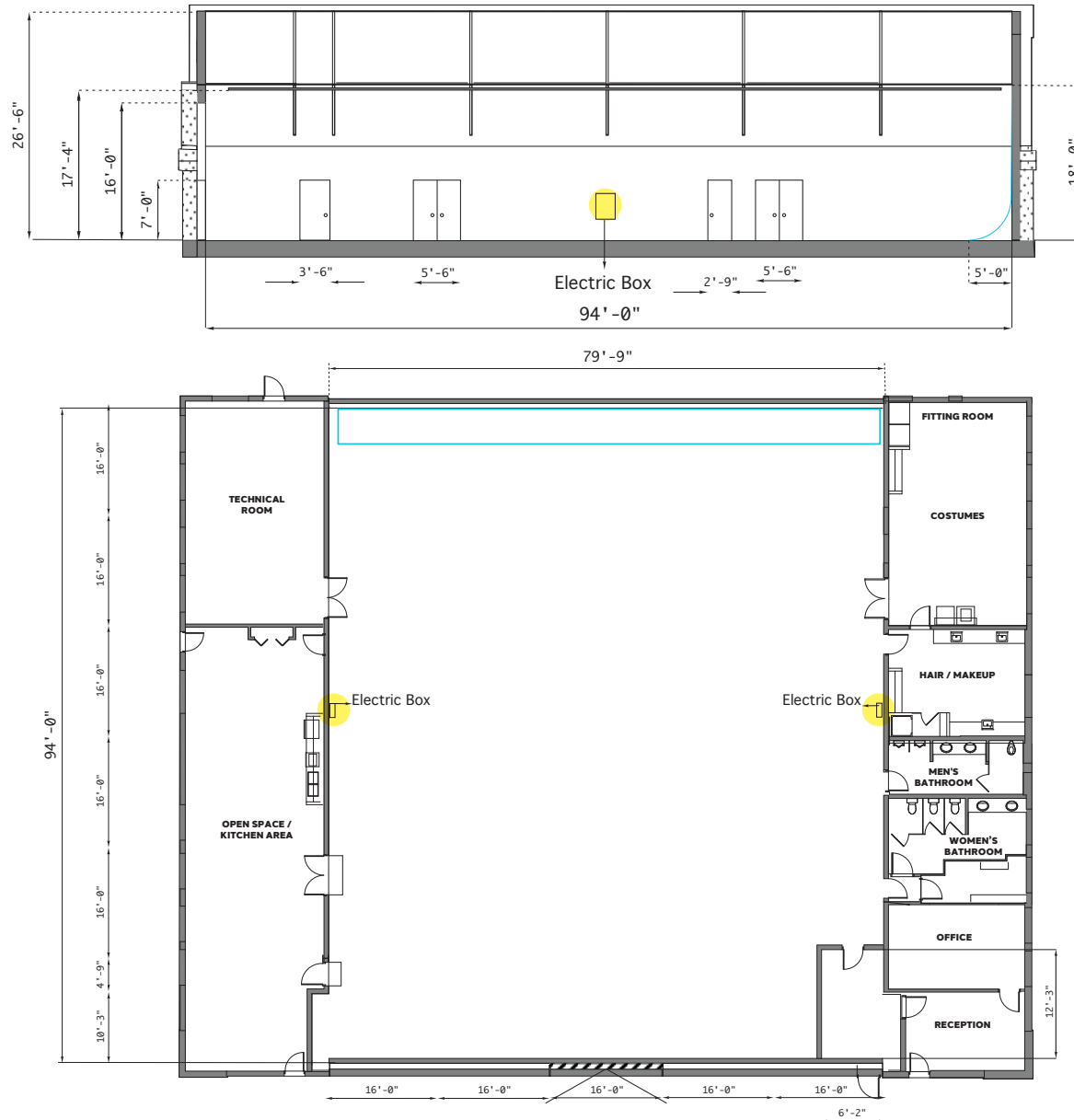
2 X 300 amp 120 - 208V - 3ØY

Max Capacity: **1,800 amp (100%)**

Continuous demand at **80%**

Periodic demand at **100%**

(Not soundproof)



 ELECTRIC BOX