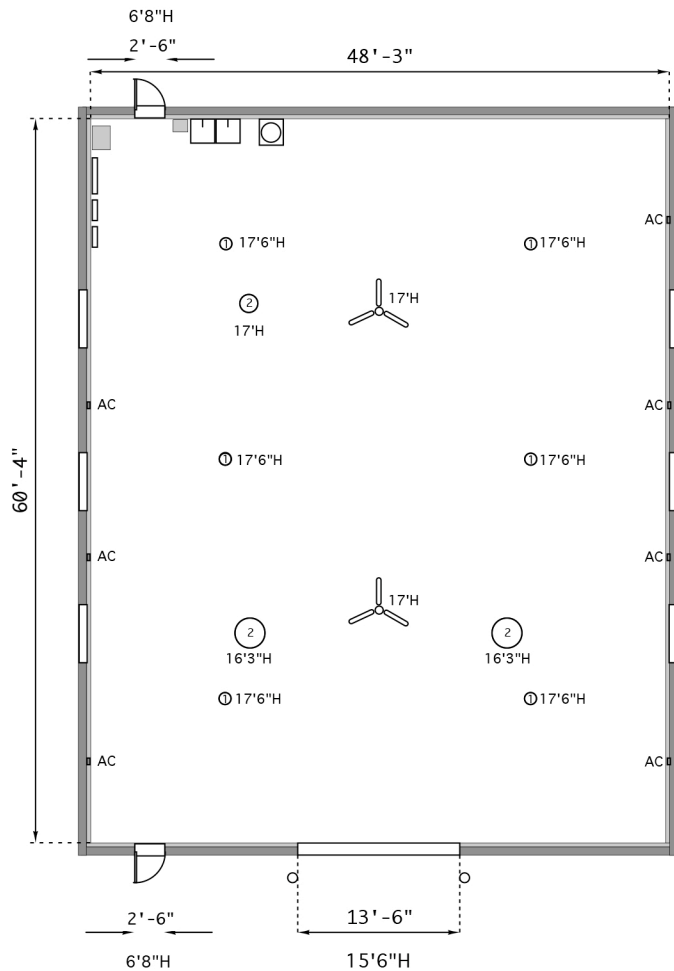
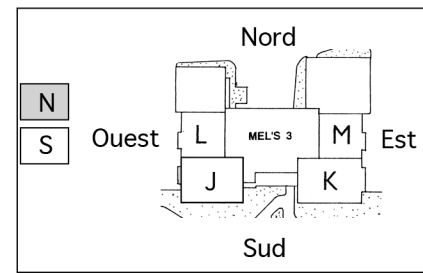
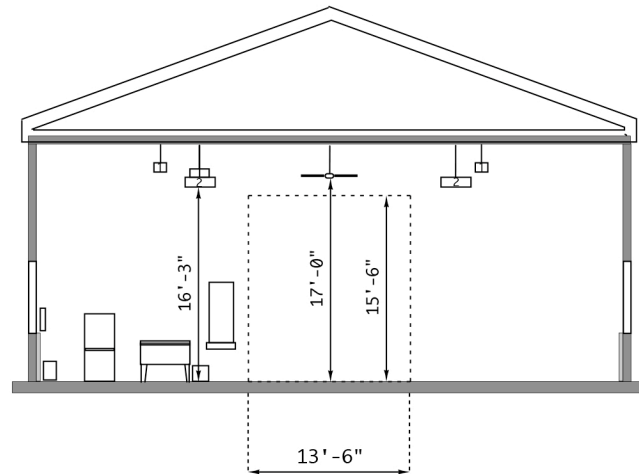


- ① Éclairage
- ② Air chaud
- ③ Air chaud
- Ventilateur



60'4" x 48'3".....= 2'910.92 Pc



60'4" x 48'3" = 2,910.92 Pc

TITRE : MELS 3
SALLE : Atelier Extérieur Nord

MELS

échelle / scale
1/8"=1'(50% 1/16"=1')

date (aa.mm.jj) / (yy.mm.dd)
2005 / 12 / 05